

How to get around the Île-de-France region

A guide for visitors
and tourists



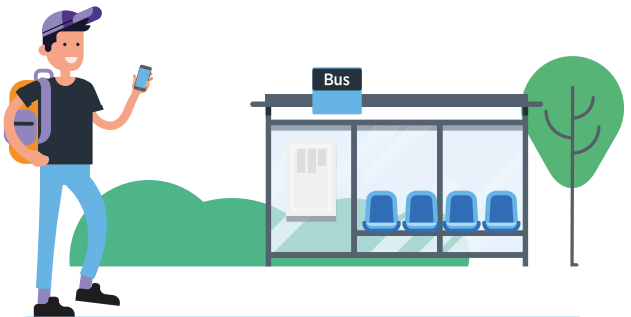
Plan

your journey

It's **easy to find** your way and **plan your trip** with our journey planner. Depending on **your accessibility needs** and the **modes of transport you prefer**, you can find **the route best suited** to the time you travel.

Go to the website or app:

[Ile-de-France Mobilités/Journey Planner](#)



- ▶ You will also find the **latest service status** and **network maps**
- ▶ **In Favourites** you can add your **favourite station** to make it easy to search
- ▶ FAQs : find the answers to all **your questions in the Purchase / Frequently asked questions section**

Visitors and tourists

Keep things simple

Use your phone to buy and validate your tickets. You will avoid the queues at the station!

Navigo Easy, a travel card to store your tickets.

- ▶ buy one for **€2.00**
- ▶ you can then **load the following tickets onto the card**: ticket t+, OrlyBus, RoissyBus and Navigo Day Ticket
- ▶ **buy your tickets** via the Ile-de-France Mobilités app or at ticket machines and ticket offices*
- ▶ **you can share** the card with someone else, but only one person can use it at a time

You will find all the information you need on fares on our site : www.iledefrance-mobilites.fr/en/tickets-fares

→ With the **Ile-de-France Mobilités app**, on your phone you can **buy tickets directly** on your phone. Your phone becomes your ticket, just touch it on the validators on the bus, train, tram, RER or metro. (Android phone only).*

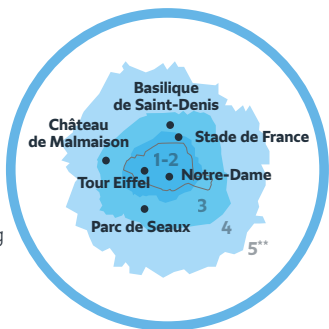


* list of compatible phones at : www.iledefrance-mobilites.fr

A transport ticket adapted to your needs

- a ticket for one day?
- a ticket just for central Paris?
- a ticket to travel all week and visit the museums?

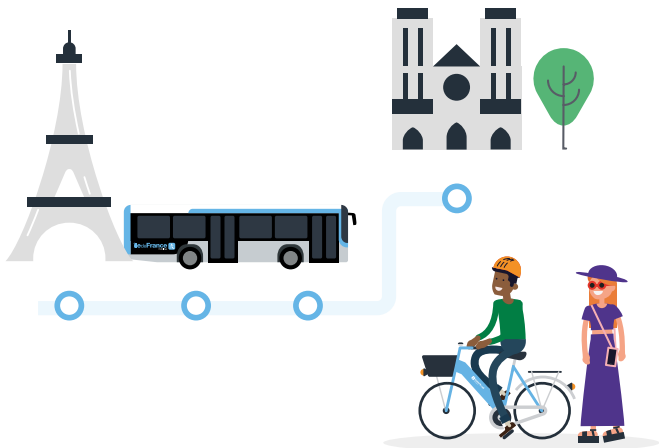
Whether you are travelling regularly or just from time to time, for a short or long stay, we'll help you find the ticket that best suits your needs.



** There are five fare zones covering the Ile-de-France public transport network, from central Paris to the outer suburbs.

Paris Visite

- ▶ travel 1, 2, 3 or 5 days in a row, unlimited travel in the selected zones
- ▶ from **€13.55** (one day, zones 1 to 3)
- ▶ **cultural and commercial** advantages linked to the ticket
- ▶ on sale at **train** and **metro station ticket offices**



Navigo Day Ticket

- ▶ if you are planning to use public transport **a lot in one day**
- ▶ **unlimited travel** on all modes of transport
- ▶ from **€8.45 per day** for two zones (see zone map)
- ▶ **quick and easy** to buy with your Navigo Easy Travel Card and the Ile-de-France Mobilités app

At the heart of the regional transport network,
Ile-de-France Mobilités
designs, organises and finances innovative solutions
for today's and tomorrow's mobility solutions.

Transport is changing!



Services that fit your needs

suited to the pace of life of everyone in the region (buses more often and later in the evening)



More comfortable trains and buses

(new trains, "zero emission" buses, etc.)



New mobility solutions

in addition to the standard network (carpooling, Park and Ride, bike parks, Véligo Location bike rental, etc.)



Everyday digital services

(regional multimodal journey planner, real-time information, etc.)