

## We fund transport across the Greater Paris Region

- We **jointly fund infrastructure upgrades** to roads and rail, as well as **the renovation and purchase of rolling stock** (suburban-national rail, subway, tramway, bus, etc.).
- We **are responsible for the keeping the overall transport costs in the Greater Paris Region in balance** and **manage an operating budget** of some 10 billion euros.
- We **create and determine price passenger tickets**.

Each year, the cost of running the train, subway, tramway and bus systems in the Greater Paris Region amounts to some:

**€10 billion** \*  
\*2016 estimate

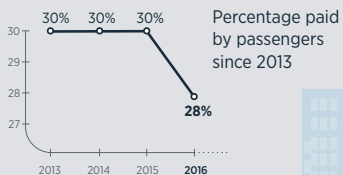


**72%**

of which is funded by employers, local authorities and other revenue sources

and  
**28%**

of which comes from passengers, through the purchase of Navigo travel passes and single tickets



Tous vos transports en  
**île de France**



Tous vos transports en  
**île de France**

## We design, organise and finance the public transport used by residents all across the Greater Paris Region.

**STIF brings together stakeholders** from all over the Greater Paris Region transport system (passengers, elected representatives, manufacturers, transport operators, infrastructure managers, etc.) in order to improve the service provided to passengers.

**We define and drive** development and modernisation projects for all modes of transport, and outsource operations to transport operators.

STIF, which encompasses the Greater Paris Region, and the eight *départements* in the Île-de-France region, **thus makes the vision for all public transport in the Greater Paris Region** (suburban-national rail, subway, tramway, bus, etc.) reality.

# STIF

in Short



**Valérie Pécresse**  
President of the  
Île-de-France Region  
President of the STIF

### The STIF Board

**île de France**  
15 representatives

**MAIRIE DE PARIS**  
5 representatives

**SEINE-MARNE**  
LE DÉPARTEMENT  
1 representative

**Yvelines**  
Le Département  
1 representative

**Essonne**  
LE DÉPARTEMENT  
1 representative

**hauts-de-seine**  
LE DÉPARTEMENT  
1 representative

**seine-saint-denis**  
LE DÉPARTEMENT  
1 representative


**VAL de MARNE**  
le département  
1 representative

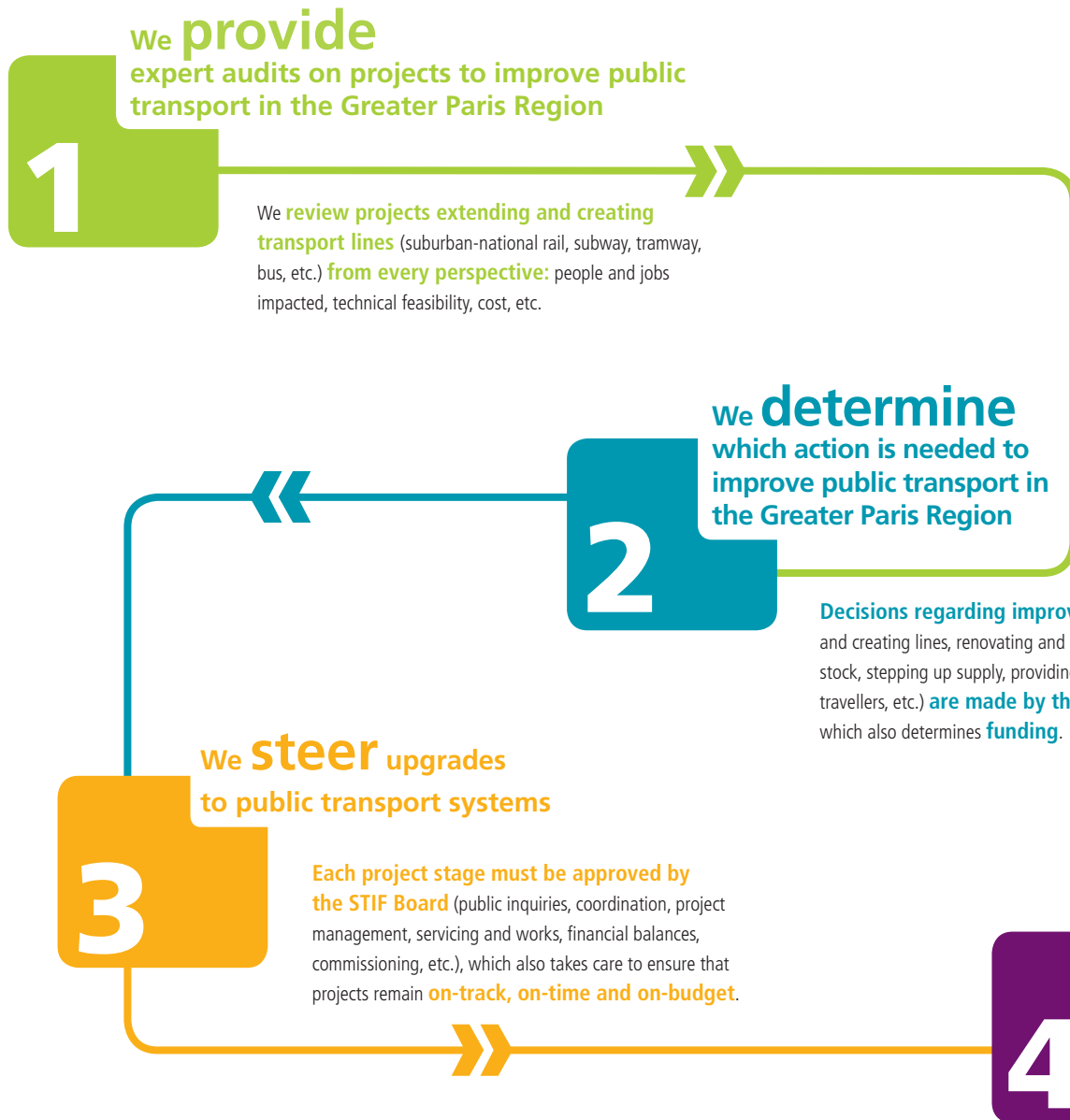
**val d'oise**  
le département  
1 representative

**1 EPCI representative**  
(Public Inter-municipal Cooperation Institutions)

**1 CRCI representative**  
(Regional Chamber of Commerce and Industry)

# What We Do

 We want to **hear what you have to say**



- **Through the STIF Board Representatives**, we keep in regular contact with citizens.
- **Through consensus-building sessions and public debates**, we inform and interact with transport users about new projects.
- **Through meetings with user associations**, we keep up with traveller experiences and expectations line by line.



- We **monitor all projects to ensure they are proceeding properly**, using such mechanisms as performance contracts with transport providers, in which targets are set on:
- on-time delivery,
  - service quality (traveller information, welcome, etc.),
  - implementation timeline,
  - required investments,
  - implementation of Board decisions, etc.